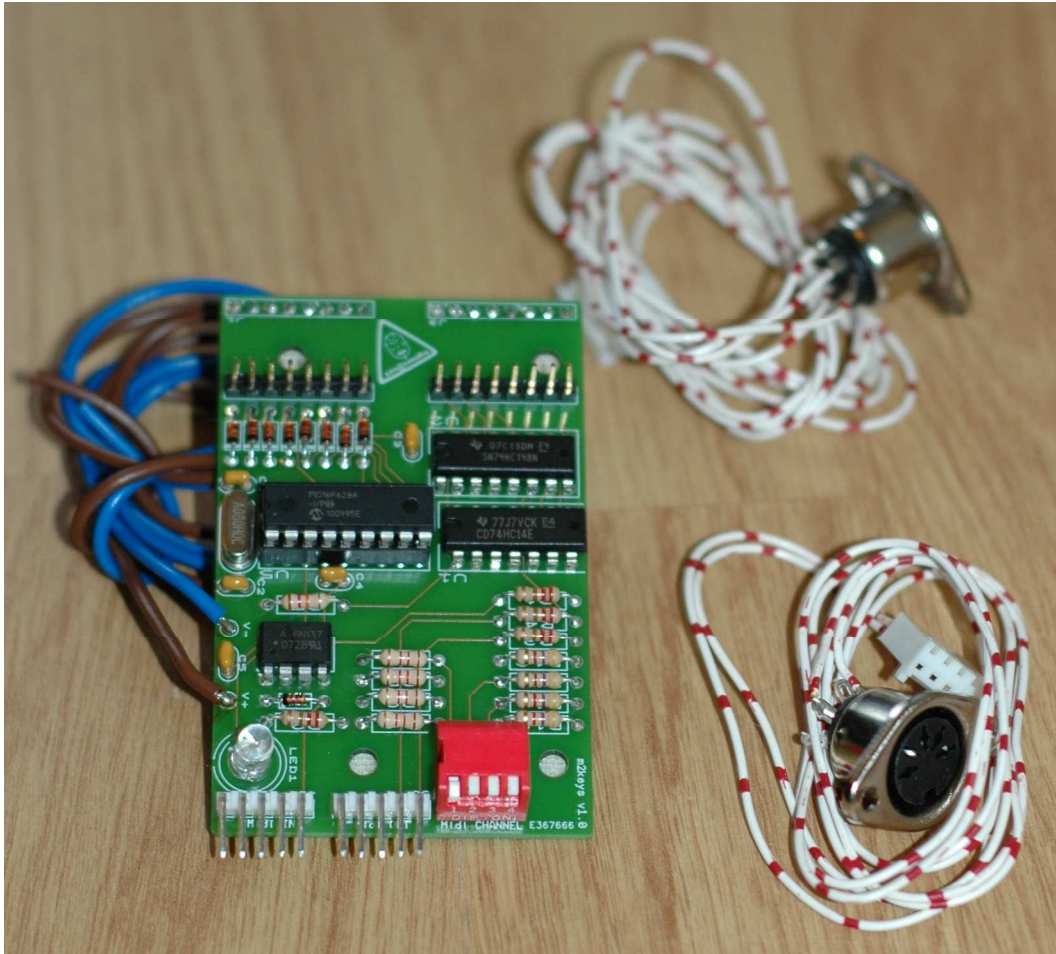
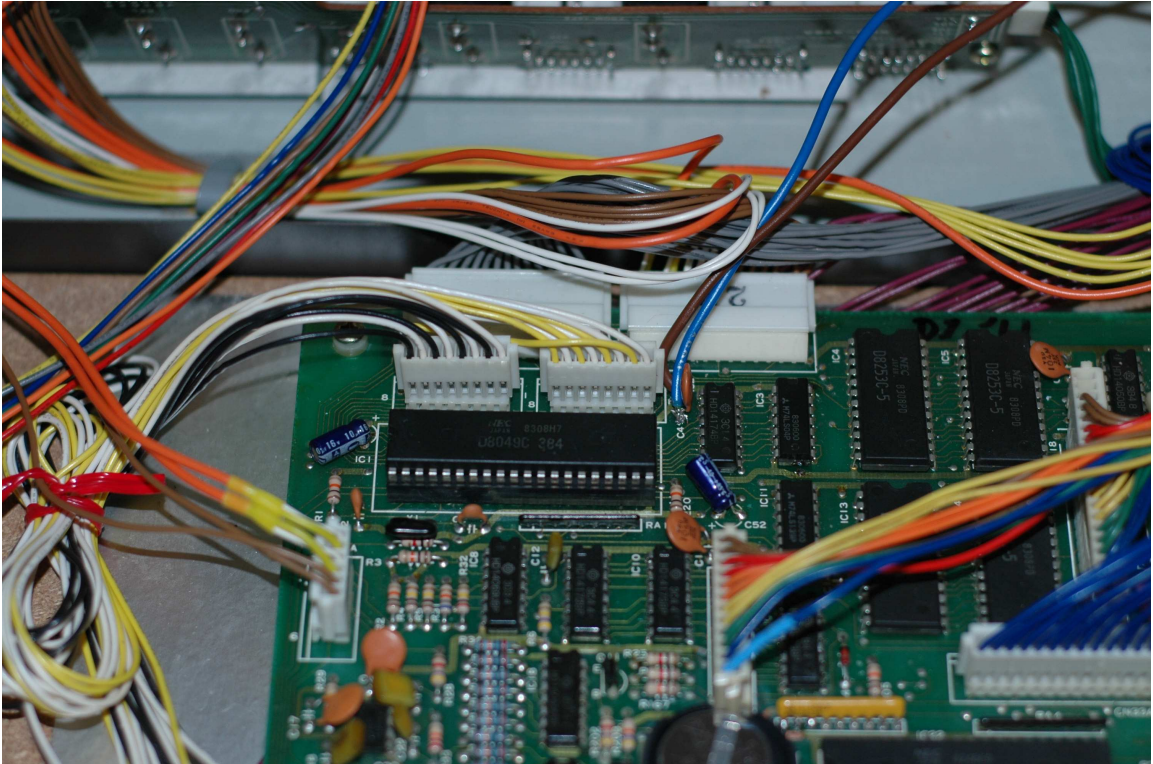


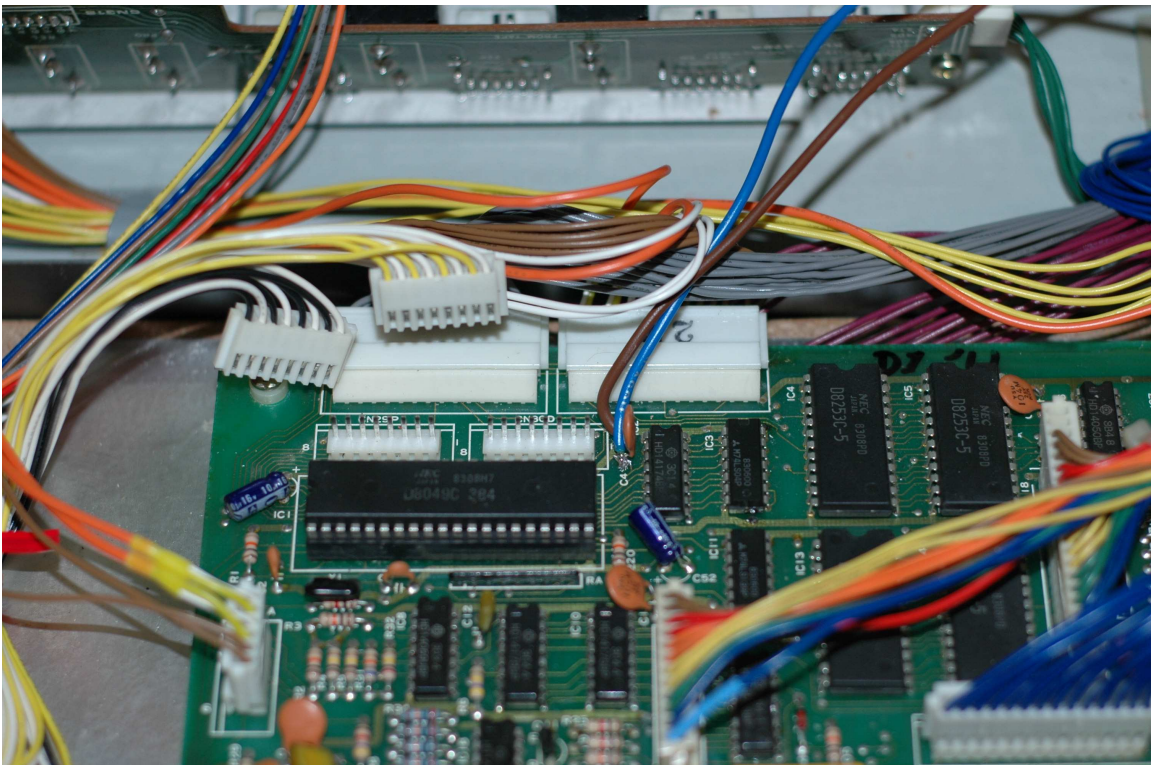
Installation of the Dtronics Poly61 midikit



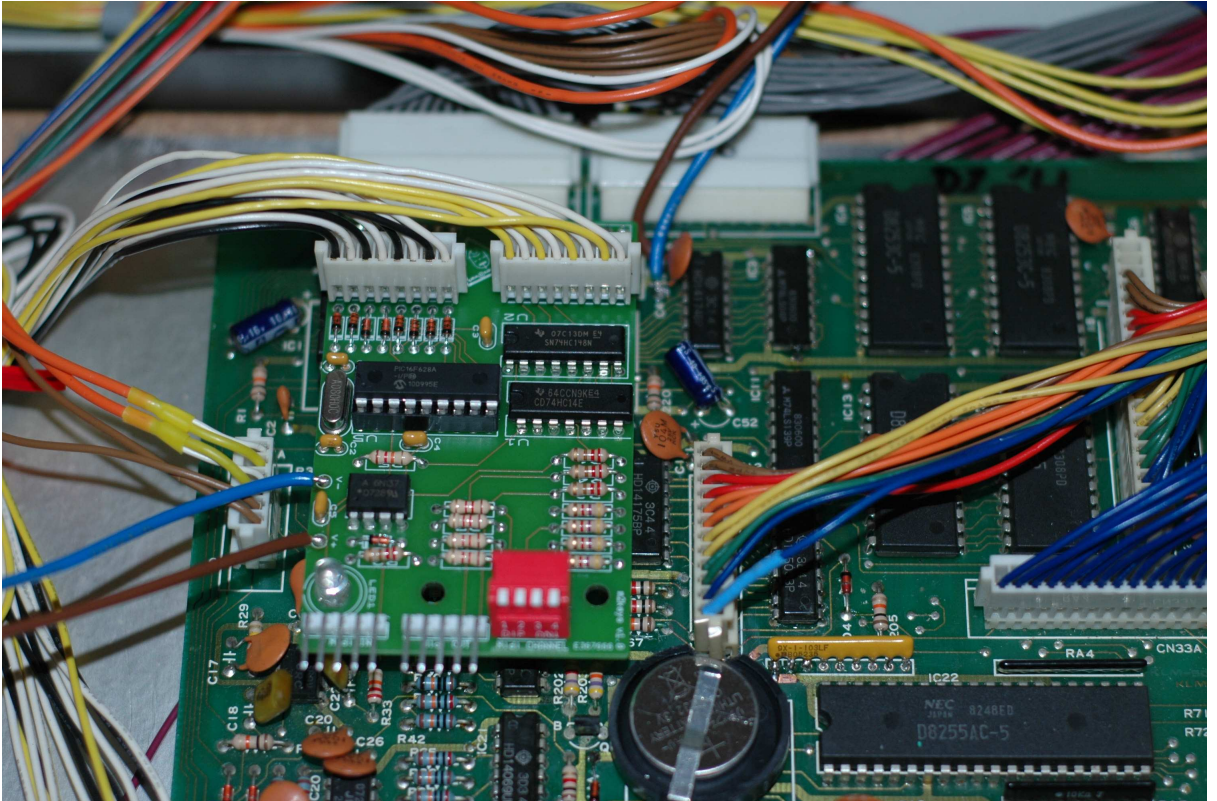
- 1- Open the Poly61 by removing the 4 top screws and the 4 bottom screws.
- 2- Locate the keyboard connectors (CN29 and CN30) and remove them



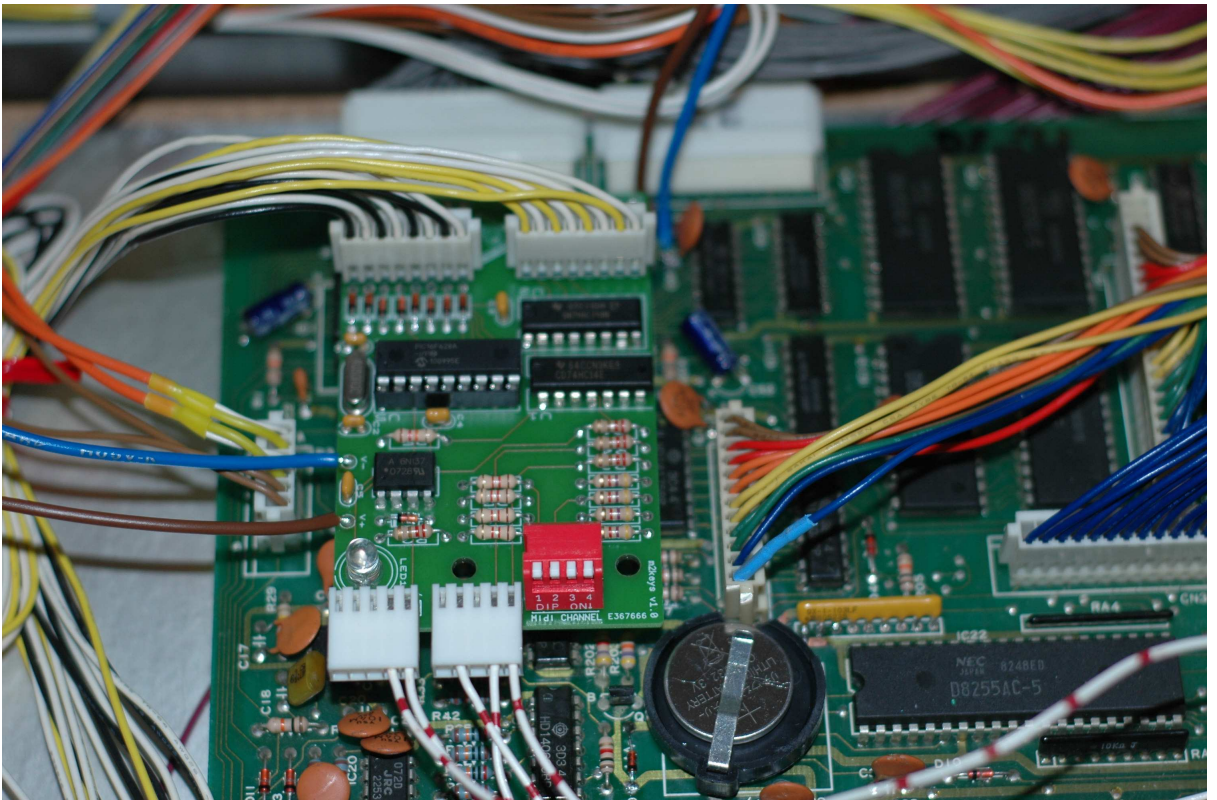
- 3- Solder the power wires from the midi kit to the 5V and ground of the poly61 (Brown wire = +5V and blue wire is ground) (we connected them to the capacitor on the right of CN30 but you are free to take any other point)



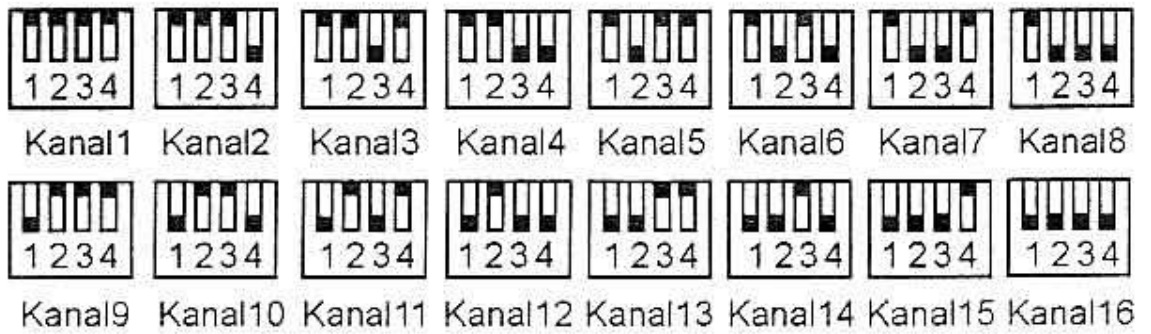
- 4- Push the midi kit on the two keyboard headers



- 5- Drill holes for the midi connectors, mount them and connect the cables to the midi kit. The one with 2 wires to the midi in and the one with 3 wires to the midi thru



- 6- Set the midi channel with the dip switch:
All switches to the OFF position for channel 1



- 7- Turn on the poly61 and connect an external midi keyboard. You should now be able to play the poly61 over midi.
- 8- Close the poly61 with the 8 screws.